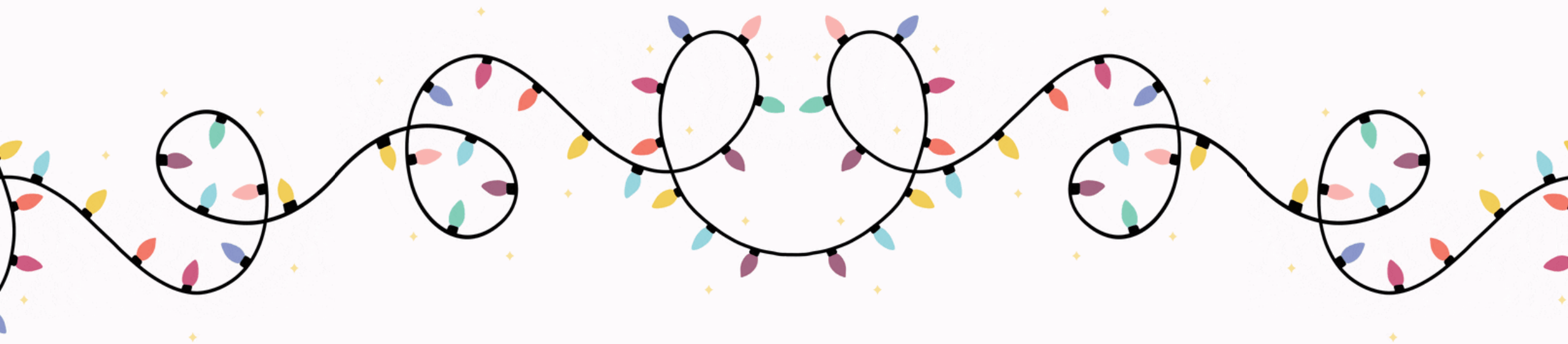


MAAC

Annual Meeting 2021



What's On Deck



Update: State of the MACC Network



MACC Governance Update and New Board Member Welcome



Gratitude and thanks



IDEA discussion with Lissa Jones-Lofgren



MACC Network Snapshot



\$380 Million

Generated for Minnesota's
Economy



3,000

Nonprofit professionals strong



500,000+

Individuals and families served



Challenges & Priorities Snapshot



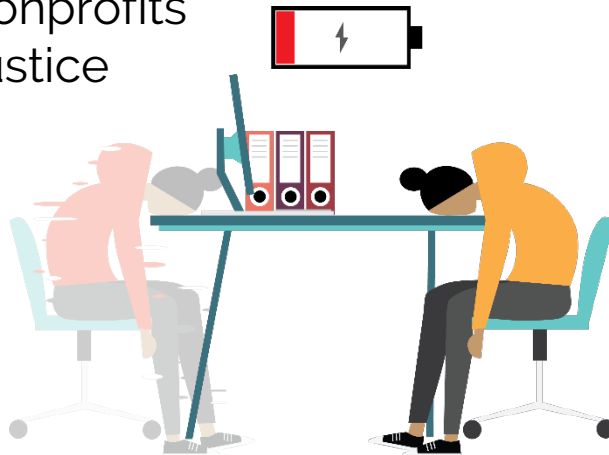
Critical work of nonprofits
in fighting injustice



Ongoing struggle of
keeping everyone safe



Concerns about the deeply
unequal recovery



A workforce that is
beyond exhausted



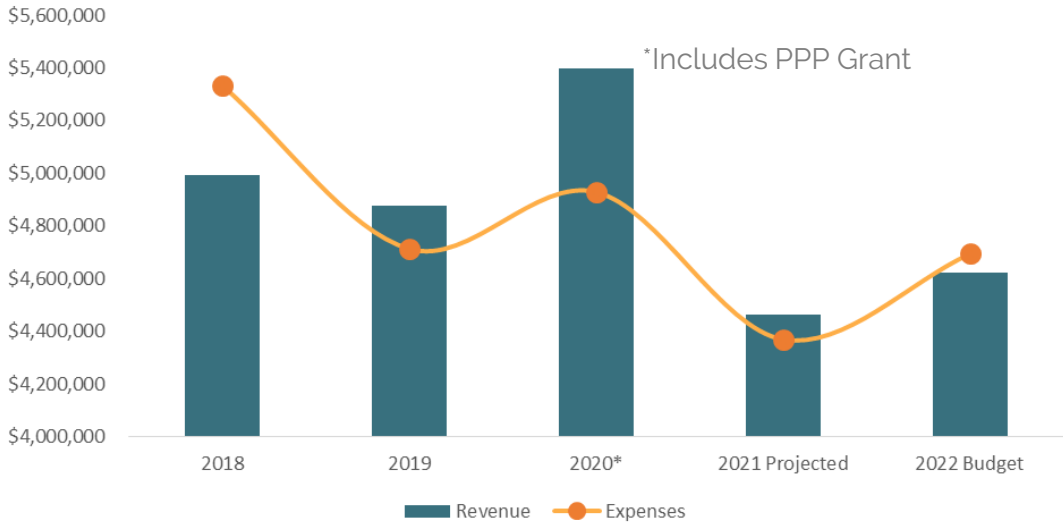
Fighting financial uncertainty
and the return of the funding
"status quo"

Programs and Services Snapshot

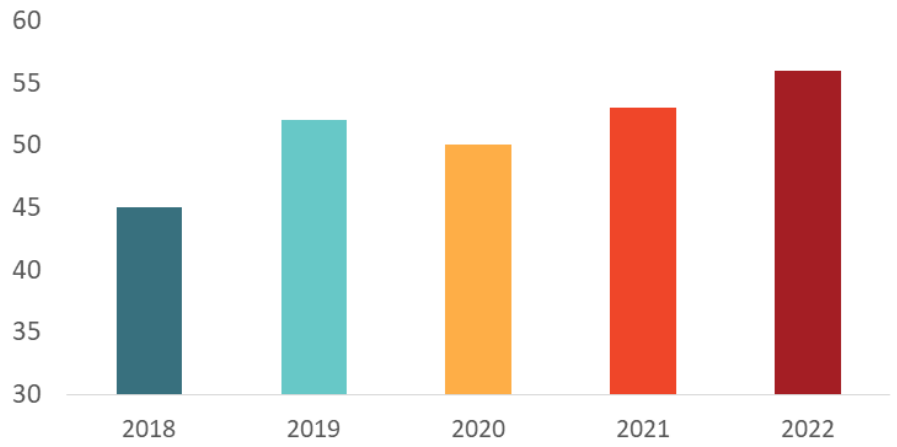


Business Model Snapshot

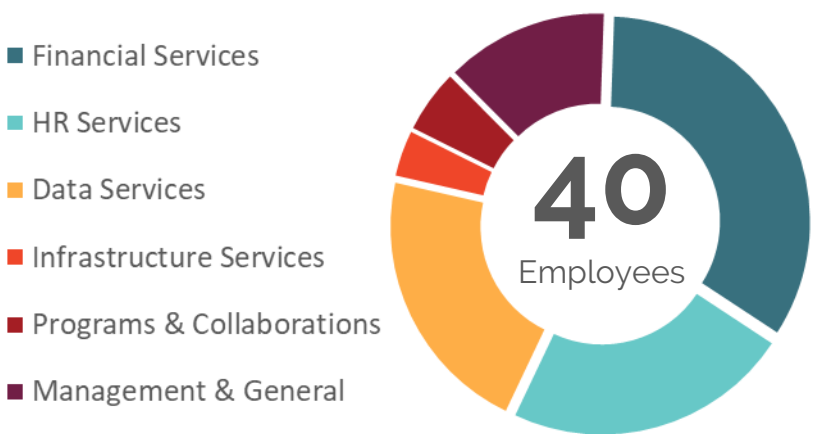
Revenue and Expenses



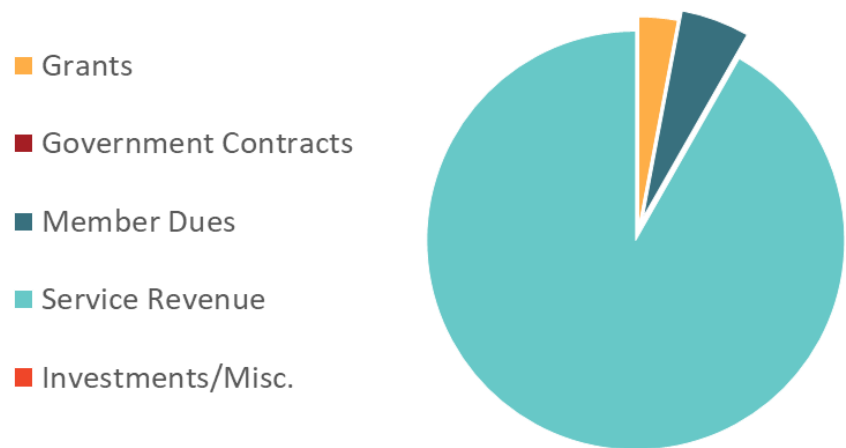
MACC Members



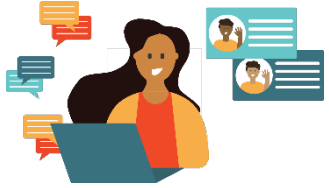
MACC Employees



Revenue Sources



Business Model Snapshot



Human Resources

17 Members Supported
500+ Employees supported



Accounting

10 Members Supported
35m Combined annual budget



Data Services

39 Members Supported
1500+ Daily users supported



Information Technology

7 Members Supported
400+ End users supported



Government Contracts

11 Members Supported
4000+ Invoices supported



Programming & Convenings

79 Virtual Convenings with
800+ Virtual Attendees

MACC Governance



Our 2021 Board of Directors:

Executive Committee:

Anne Long, Board Chair
former Plymouth Christian Youth Center

Martha Moriarty, Immediate Past Chair
LDA Minnesota

Molly Greenman, Vice Chair
Governance Committee Chair
The Family Partnership

Susie Brown, Treasurer
Finance Committee Chair
Minnesota Council on Foundations

Nancy Brady, Secretary
Neighborhood House

Claudia Waring
Asian Women United of Minnesota

Jonathan Palmer
Hallie Q. Brown Community Center

Linda Bryant
former Hope 4 Youth

Leslie Wright
Mitchell Hamline School of Law

Christine Brinkman
Tubman

Otis Zanders
Ujamaa Place

Welcome to our Newly Elected Board Members:

Suzanne Fuller Burks

Phyllis Wheatley Community
Center

Christopher Campbell

Plymouth Christian Youth Center

John Till

The Family Partnership

Gratitude for our Outgoing Board Members

Susie Brown

Molly Greenman

Anne Long





**Thank you & Happy
Holidays!**
(Stay warm!)



MAACC